

A close-up photograph of a red Western snow blower. The image shows the upper cylindrical part of the machine, which is painted a vibrant red. A prominent black stripe runs horizontally across the middle of the red section. The word "WESTERN" is printed in large, bold, white, sans-serif capital letters on the red surface, enclosed within a black, stylized rectangular border with rounded corners. Below the stripe, a single silver bolt is visible. The background is plain white.

**WESTERN**

***ICE CONTROL  
EQUIPMENT***



**Tornado™**

## BLOWS AWAY THE COMPETITION

The Tornado™ poly/electric hopper spreader offers a whirlwind of unique features that cannot be found on competitive models. The Tornado uses a rubber belt conveyor that delivers a more even flow of material – either sand, salt or a sand/salt mix – and its built-in top cover doubles as a spill guard to protect the truck bed when filling the hopper.

**TORNADO™**



### CONVEYOR BELT

Belt conveyor (driven by a single 1/2-HP electric motor) delivers a more even flow of material. Options include an Inverted-Vee to reduce possible bridging.

### TOP SCREEN & POLY COVERS

Standard top screen with two-piece poly covers that double as a spill guard to help keep material out of the truck bed.



### MOLDED REAR "FEET"

Molded rear "feet" make removal, cleaning and storage easy.



### QUICK-DETACH SPINNER

Quick-detach spinner assembly makes spreader removal and storage easier than ever. An optional extended spinner and drop chute is available for vehicles with higher truck beds.



### VARIABLE SPEED CONTROL

Variable speed control utilizes multiplexing technology to provide self-diagnostics for easier troubleshooting.



# BREAKS THROUGH THE STORM

WESTERN® ICE BREAKER™ hopper spreaders are perfect for ice control on driveways, roads and parking lots. Available in 7', 8', 9' and 10' body lengths in powder-coated steel or stainless steel, these rugged v-box type spreaders mount easily on pick-up, dump or platform trucks. All spreaders are covered by the WESTERN Two Winter Warranty.

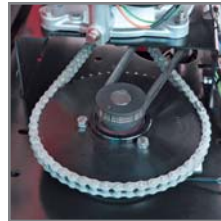
### CHMSL

Center high mounted stoplight (CHMSL) is standard and meets Federal Motor Vehicle Safety Standards.



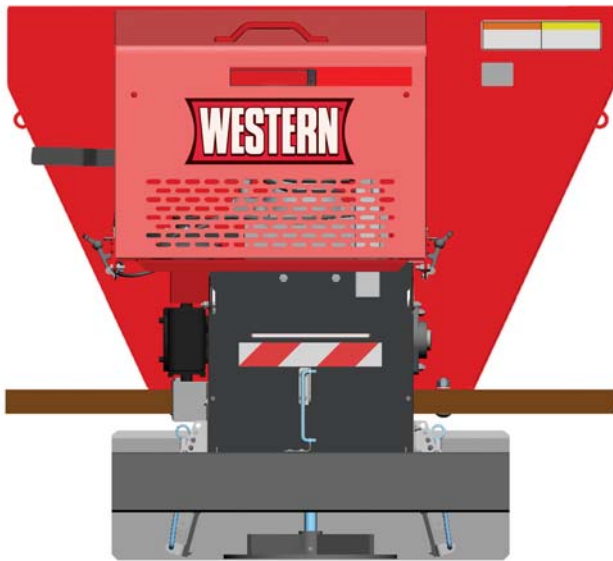
### CONTROLLER

Gas engine spreaders feature cab-mounted electronic throttle control with choke indicator light and electric clutch.



### DRIVE & CONVEYOR

A positive chain and sprocket drive powers the conveyor and features a superior rust-resistant coating for extended chain life. The 16" wide pintle chain conveyor reduces bridging and moves more material for faster unloading.



### POLY SPINNER

The poly spinner will not rust, promoting longer life.

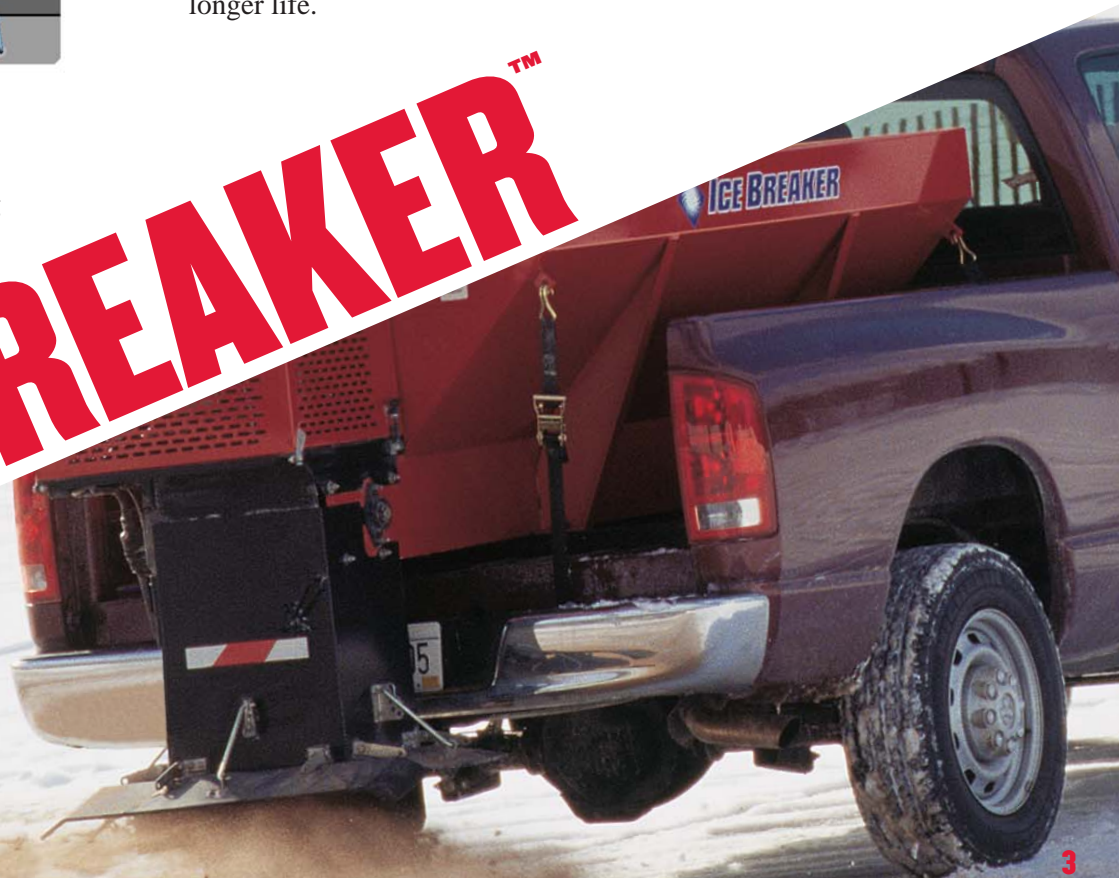
### ALSO AVAILABLE

- Choice of unique vehicle battery kit which eliminates the need for a dedicated battery and conventional battery tray
- Inverted-Vee (std. on High Capacity models)
- Standard or extended chute
- Standard and heavy-duty top screens
- Dual hydraulic chute option

### CHUTE DEFLECTORS

Replaceable poly chute deflectors will not rust and are more forgiving when encountering obstacles.

# ICE BREAKER™





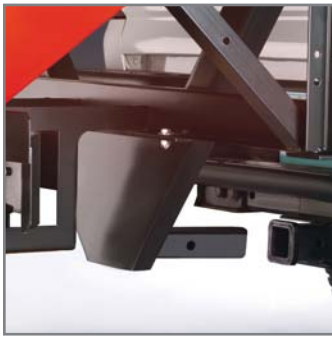
**MODEL 500**

## MODEL 500

- Designed for compact pickups or SUVs with a Class III trailer hitch
- 5 cu. ft. capacity poly hopper
- 1/3-HP, 12V DC sealed motor and direct drive auger
- Choice of “on/off” switch or variable speed control
- Poly spinner and ratchet straps are standard
- Optional top screen and adjustable deflector

## HOW LOW CAN YOU GO?

All of these tailgate spreaders feature a low profile design which provides an unobstructed rear view from the cab. They're ideal for spreading dry #1 rock salt, calcium chloride and other de-icing materials.



### RECEIVER HITCH MOUNT

A Class IV receiver hitch mount is standard on Model 2500 and optional on Model 1000. A Class III receiver hitch mount is standard on Model 500. No tools are required to install or remove the spreader.

# LOW PROFILE



**MODEL 1000**



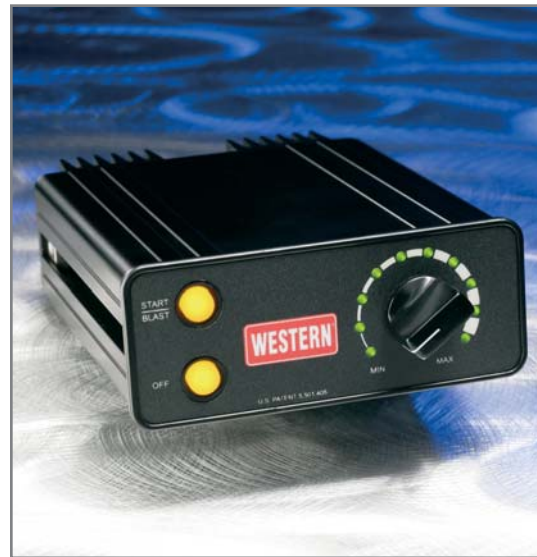
**MODEL 2500**

## MODEL 2500

- 9.5 cu. ft. capacity high-density polyethylene hopper
- 1/3-HP, 12V hi-torque motor located in a sealed housing in the hopper
- Adjustable feed gate with positive material flow shut-off
- Adjustable material deflectors
- 15" polyurethane spinner
- Receiver hitch mount and nylon ratchet straps
- Molded polyethylene cover
- Choice of in-cab "on/off" switch or variable speed control

## MODEL 1000

- Poly hopper has 8 cu. ft. capacity
- 1/3-HP, 12V DC motor mounted inside a sealed housing in the hopper for corrosion protection
- Powder-coated steel auger and agitator
- Choice of in-cab "on/off" switch or variable speed control
- Choose "On-Bumper" mounting system, dual "Swing-Away" design (which allows the empty spreader to swing out of the way for easy access to the truck's tailgate and bed) or Class IV receiver hitch mount



### VARIABLE SPEED CONTROL

Available as an option for all Low Profile models.



# PRO-FLO™ 2

## GO WITH THE FLO

Capable of spreading all types of material, including wet sand, the PRO-FLO™ 2 sets the standard for tailgate-type spreaders.

- Poly hopper has 10 cu. ft. capacity
- 1/3-HP, 12V DC motor with belt reduction drive
- Large, 15 1/2" poly spinner increases spread pattern
- Spreader height, feed gate and deflectors are all adjustable



### TWO-STAGE DELIVERY

Two-stage design features a 16" belt conveyor to assure positive feed with all materials.



### VARIABLE SPEED CONTROL

Available as an option on the PRO-FLO™ 2.



### FRAME MOUNT

The under-bed frame mount includes a Class IV receiver hitch and is available as an option for the PRO-FLO™ 2.

## THE PRO-FLO™ 2 ALSO INCLUDES:

- Center high-mounted stoplight
- Choice of in-cab "on/off" switch or variable speed control
- Choice of two mounting systems: in-bed truss mount or under-bed frame vehicle-specific mount which includes a Class IV receiver hitch

WANT MORE INFO?

# Visit [westernplows.com](http://westernplows.com)

For over 55 years, WESTERN® snowplows have been the choice of the professional snowplower. Our website, [westernplows.com](http://westernplows.com), houses a variety of useful information for plowers. Here are just a few of the valuable features you'll find online:



## DISTRIBUTOR DIRECTORY

Visit the distributor directory for a dealer near you.

## PUBLICATIONS LIBRARY / Quick Search

Search and view technical publications for WESTERN® products.

## PRODUCTS

Get details and specs on all WESTERN® plows, spreaders and accessories.

## VIDEO LIBRARY

View WESTERN® products in action.

## Quick Match

The snowplow application system identifies which WESTERN® plows are compatible with your vehicle.

## TORNADO™ POLY/ELECTRIC HOPPER SPREADER SPECIFICATIONS

Poly Electric Hopper Spreader	Hopper Conveyor	Approximate Wt. Empty	Capacity Cu. Yd.	Spreading Width	Length	Width	Height	Poly Spinner Diameter
<b>TORNADO™</b>	<b>16"</b>	<b>550 lbs.</b>	<b>1.25</b>	<b>2'-40'</b>	<b>84"</b>	<b>50"</b>	<b>37"</b>	<b>15½"</b>

## ICE BREAKER™ SPREADER SPECIFICATIONS

Body Side Length	Hopper Construction	Dimensions Overall Length x Width x Height	Hopper Weight* (Gas Models)	Capacity Struck Cu. Yd.	Capacity Rounded Cu. Yd.	Spreading Width	Power Unit Options			Vehicle Application
							10 HP I/C Tecumseh	11 HP I/C Honda	Hydraulic**	
7'	12 gauge steel	103" x 50¾" x 32"	640 lbs.	1.7	2.2	2'-40'	X			3/4 and 1 Ton Pick-up Trucks (over 8500 lbs. GVWR)
7'	14 gauge SS	103" x 50¾" x 32"	600 lbs.	1.7	2.2	2'-40'		X		
8'	12 gauge steel	115" x 50¾" x 32"	750 lbs.	2.0	2.5	2'-40'	X	X	X	
8'	14 gauge SS	115" x 50¾" x 32"	700 lbs.	2.0	2.5	2'-40'	X	X	X	
8'	12 gauge steel	115" x 58" x 37½"	800 lbs.	2.6	3.2	2'-40'	X	X	X	Dump Body or Flat Bed Trucks (above 15,000 lbs. GVWR)
8'	12 gauge SS	115" x 58" x 37½"	800 lbs.	2.6	3.2	2'-40'	X	X	X	
9'	12 gauge steel	127" x 58" x 37½"	900 lbs.	2.9	3.6	2'-40'	X			
9'	12 gauge SS	127" x 58" x 37½"	900 lbs.	2.9	3.6	2'-40'		X		
10'	12 gauge steel	139" x 58" x 37½"	1000 lbs.	3.3	4.1	2'-40'	X	X	X	
10'	12 gauge SS	139" x 58" x 37½"	1000 lbs.	3.3	4.1	2'-40'	X	X	X	

\* Hydraulic models weigh 150 lbs. less than like-length gas models.

\*\* Dual Hydraulic Drive – An optional hydraulic-powered spinner chute is available for hydraulic models.

## TAILGATE SPREADER SPECIFICATIONS

Tailgate Spreader	Hopper Construction	Approximate Wt. Empty	Capacity	Spreading Width	Dimensions H x W x L	Motor Size	Spinner Size	Materials	Vehicle Application
<b>Model 500 Low Profile</b>	Polyethylene	75 lbs. with mount	5 cu. ft.	3'-30'	34" x 39" x 21"	⅓ HP	10"	Salt	Vehicles with Class III Hitch
<b>Model 1000 Low Profile</b>	Polyethylene	105 lbs. w/o mount	8 cu. ft.	3'-30'	35" x 50½" x 19½"	⅓ HP	10"	Salt	Full-Size Trucks
<b>Model 2500 Low Profile</b>	Polyethylene	105 lbs. with mount	9.5 cu. ft.	3'-30'	40" x 50" x 25"	⅓ HP	15"	Salt	Full-Size Trucks
<b>PRO-FLO™ 2 (2-Stage)</b>	Polyethylene	235 lbs. w/o mount	10 cu. ft.	5'-20'	46" x 46" x 24"	⅓ HP	15½"	Sand & Salt	¾ & 1 Ton



See dealer for details.

**WESTERN PRODUCTS • P.O. Box 245038 • Milwaukee, WI 53224-9538 • [www.westernplows.com](http://www.westernplows.com)**

All rights reserved.

A DIVISION OF DOUGLAS DYNAMICS, L.L.C.

©2008 Douglas Dynamics, L.L.C.

Western Products reserves the right under its product improvement policy to change construction or design details and furnish equipment when so altered without reference to illustrations or specifications used. Western Products and the vehicle manufacturer may require or recommend optional equipment for spreaders. Do not exceed vehicle ratings with a spreader. This product is manufactured under the following US patents: 5,375,773; 5,501,405; other patents pending. Western Products offers a limited warranty on all spreaders and accessories. See separately printed page for this important information. The following are registered (®) or unregistered (™) Trademarks of Douglas Dynamics, L.L.C.: ICE BREAKER™, PRO-FLO™2, SWING AWAY®, TORNADO™, WESTERN®.