

# PLD Dump Body

*A continued tradition  
since the early 1900's*



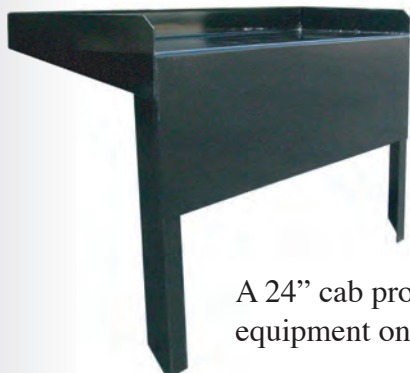
## Tough & Versatile

The Galion PLD body is designed for superior service on 12000 - 26000 GVWR cab/chassis'. It features all 10 gauge high tensile steel floors, tailgate, head sheets and single V brace sides. 10" full depth rear corner posts and boxed "material-shedding" top rails are also standard. The PLD is designed to operate with scissor type conversion hoists.



- Available in lengths of 12', 14' and 16'
- Material-shedding boxed top rails
- Double acting tailgate
- 10 gauge high tensile construction
- 3" crossmember understructure
- 3-panel tailgate
- Horizontal V braced sides
- Quick release upper hardware

PLD



A 24" cab protector is Optional equipment on the PLD

Visit Galion and all affiliated companies on the world wide web.  
[www.galiongodwin.com](http://www.galiongodwin.com)



## PLD Specifications:

### **General Dimensions:**

Available in inside lengths of 12', 14' and 16" inside width with 18" sides, 42" front and 24" gate.

### **Sides:**

10 Gauge high tensile steel sides with horizontal pressed V brace, material shedding boxed top rails, full depth 10" rear corner post and 6" front and rear board extension pockets. Drop sides do not have pressed V brace.

### **Floor:**

10 gauge high tensile steel, with 2" radius floor to side radius.

### **Front Bulkhead:**

10 gauge high tensile steel construction with two bend top flange and horizontal V brace.

### **Tailgate:**

10 gauge high tensile steel with full perimeter box bracing, two intermediate vertical box braces, double acting with long chains and two sets of banjo eyes.

### **Tailgate Hardware:**

Heavy duty cast quick release top hardware and cast overshoot lower hardware with manual release handle.

### **Lights:**

Meets all requirements of FMVSS108 with oval stop/tail/turn lights recessed in rear post. All lighting is recessed, shock mounted, complete with factory wiring harness.

### **Understructure:**

Stacked design utilizing 7" structural longitudinals gusseted to 3" structural channel crossmembers on 12" centers, lubricated front and rear cross shaft and full width rear bolster.

### **Safety Features:**

All Galion PLD bodies are shipped with a "body up" warning light and OSHA required back up alarm.

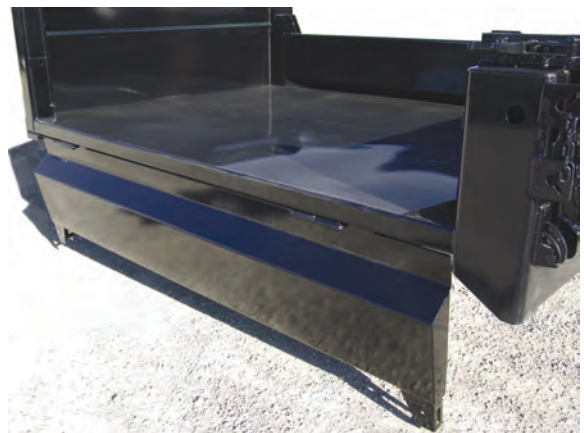
### **Options:**

- Aluminum construction
- Stainless steel construction
- Coal door in gate
- Fold down sides
- Sleek cab protector
- Integral cab protector
- Bolt on spreader apron

**FULL FACTORY WARRANTY**  
complete parts and service available  
through nationwide authorized distributors




Pictured is a close view of the upper quick release hardware and banjo eyes of the standard PLD body. This hardware makes it easy to quickly remove and reinstall the tailgate as needed.



Pictured is a view of the 12' PLD drop side option. With the release of the two independent spring latches the side folds down below the floor. The 14' and 16' dropsides are split. (two sections each side)

Galion-Godwin Truck Body Co. LLC.  
7415 Peabody-Kent Rd. Winesburg OH. 44690 P.O. Box 208  
(877) 450- 4794 Fax (330) 359-5660

Galion-Godwin is an affiliate of  Dunn, N.C.