

500U/T Dump Body

*A continued tradition
since the early 1900's*

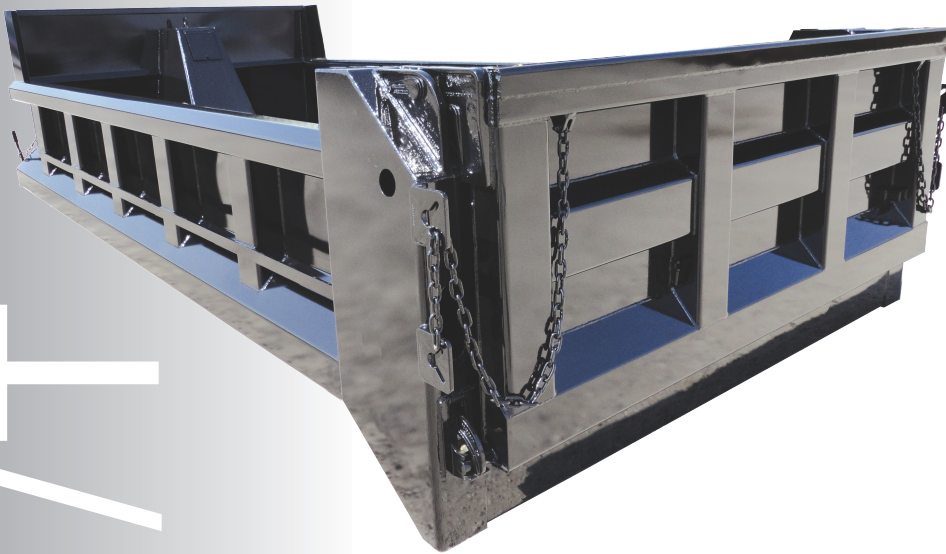


Tough & Versatile

The Galion 500U/T is excellent for over-the-highway aggregate hauling. Ideal for construction and batching work, and for hauling and spreading stone, sand, gravel and other aggregates. Galion 500U/T series bodies utilize high tensile steel throughout for best resistance to abrasion. Known the world over, Galion bodies provide the ultimate in dump body engineering, longer life and maximum performance.



- Available in 12'- 17' lengths
- Material-shedding boxed top rails
- 8 gauge high tensile floor and tailgate
- 10 gauge high tensile sides and front
- 6-panel tailgate
- Tarp-friendly upper gate hardware
- Full-depth rear corner posts



A 24" cab protector is one of many options available on the 500U/T.

Visit Galion and all affiliated companies on the world wide web.
www.galiongodwin.com



500U/T

500U/T Specifications:

General Dimensions:

Available in 12' through 17' inside lengths, in 1' increments with an 84" inside width. 12' bodies available with 33" sides and 43" ends. 13' through 17' bodies available with 43" sides and 53" ends or 48" sides and 58" ends.

Sides:

10 gauge high tensile steel with material shedding boxed top rails, full depth 15" rear corner post, vertical side braces, 10" front and rear board extension pockets, and full length tarp rails.

Floor:

8 gauge high tensile steel with 2" floor to side radius.

Front Bulkhead:

10 gauge high tensile steel construction with two bend top flange and horizontal pressed V reinforcements.

Tailgate:

8 gauge high tensile steel, 6 panel design with fully perimeter box bracing, two intermediate vertical braces and one intermediate horizontal brace and full width lower tailgate pin.

Tailgate hardware:

Heavy duty cast "tarp friendly" top hardware and cast overshot lower hardware and manual release handle.

Lights:

Meets all requirements of FMVSS108 with oval stop/tail/turn lights recessed in rear post. All lighting is recessed, shock mounted, complete with factory wiring harness.

Understructure:

Stacked design utilizing 7" structural longitudinals gusseted to 4" structural channel crossmembers on 12" centers, lubricated front and rear cross shafts and full width rear bolster.

Safety Features:

All Galion 500U/T bodies are shipped with a "body up" warning light and OSHA required back up alarm.

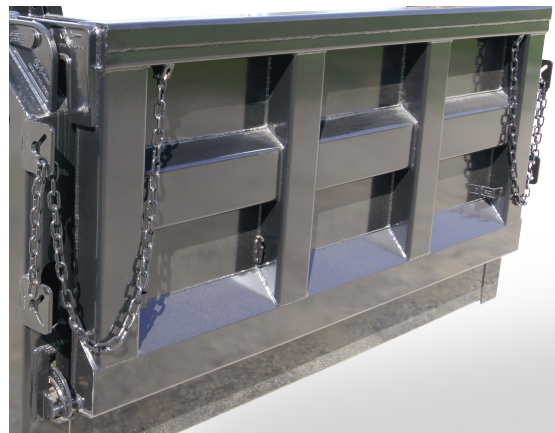
Options:

- Nine panel tailgate
- Coal door in gate
- Air high lift tailgate
- Air tailgate
- Asphalt package
- Additional light holes
- Bolt on spreader apron
- 2 way barn door tailgate
- Hoist sized for body (underbody available)
- Other gauges, material types, options available
- L.E.D. lighting ILO incandescent
- Various cab protectors (sleek, widths to 90", long version)
- Smooth side design with two horizontal "V" braces ILO vertical braces.

FULL FACTORY WARRANTY
complete parts and service available
through nationwide authorized distributors




Pictured is a close view of the upper tarp friendly hardware of the standard 500U-T body. This hardware makes it easy to quickly remove and reinstall the tailgate as needed.



Pictured is the heavy duty standard six panel tailgate. Also pictured is the full depth rear corner post and 11" deep 10 gauge high tensile steel bolster.

Galion-Godwin Truck Body Co. LLC.
7415 Peabody-Kent Rd. Winesburg OH. 44690 P.O. Box 208
(877) 450- 4794 Fax (330) 359-5660

Galion-Godwin is an affiliate of  Dunn, N.C.

Galion-Godwin reserves the right under its Product Improvement Program to modify construction and/or design and furnish equipment when so altered without reference to illustration and/or specifications shown herein. All specifications subject to change without notice.