



CENTRAL HYDRAULIC SYSTEMS

15 AND 30 GALLON MODELS



6381561

6383060



NOTHING WORKS LIKE A DOGG™

Our History



Our Corporate Family of Companies



Founded in 1946, Buyers Products is a fully integrated manufacturer and a leader in the truck equipment industry. Our engineering, manufacturing and assembly operations take place in the USA, under the Buyers family of companies. **Buyers Products' mission is to improve our Customers' profitability and productivity while enhancing the quality of our products and services.**



1946
Buyers Products Company founded by Sam Ruven and Bessie Kleinman as a distributor of driveline components.



1992
Buyers acquired Trailer Components Manufacturing (Tracom) for CNC precision machining and tooling, as well as state-of-the-art welding.



2002
Buyers moved its corporate headquarters to a brand new 235,000 sq. ft. state-of-the-art office and distribution center.



2007
Buyers began manufacturing the SnowDoggs stainless steel snowplow at our Mentor, Ohio facility.



2013
Buyers acquired an additional 500,000 sq. ft. manufacturing facility in Mentor, Ohio allowing for expansion of our aluminum and stainless steel manufacturing.



**ALL YOUR WORK
TRUCK PRODUCTS
ALL THE TIME.**

2017
Buyers launches new website with business partner portal, to make online ordering and account maintenance easy for customers.



Buyers continued to grow its product offerings and build valued relationships with customers and suppliers. Increased demand for products led to the pursuit of supply chain manufacturing solutions.



1995
Buyers acquired Progressive Powder Coating. Our Nordson automatic powder application booth is used to powder coat our Buyers toolboxes and other truck and trailer accessories.



2004
Buyers acquired Romotech in New Paris, Indiana. Our Ferry Industries Rotospeed molding machines are used to manufacture our poly salt spreaders.



2009
Buyers began our operations at Boomerang Rubber, in Botkins, Ohio manufacturing mudflaps, wheel chocks and other rubber truck and trailer accessories.



2016
Buyers establishes a 22,000 sq ft Engineering Tech Center in Mentor, Ohio. It's multi-use lab, design, training and prototyping space is dedicated to the research and development of innovative product.

Ideal for 1-Ton Super Duty Trucks

- **Preassembled and prewired for quick and easy installation**
- **Electric plow, spreader, and hoist controls keep hydraulics out of cab**
- **Clean design allows fast hose routing**
- **Modular design to save frame rail space**
- **304 stainless steel construction for superior corrosion resistance**

The 15 Gallon Central Hydraulic System (CHS) is designed for quick and easy installation. Electric, in-cab controllers for plow, spreader, and hoist eliminate the need to plumb multiple hydraulic lines into the cab. Not only does the system save installation time, it also saves cab space and frame rail space and keeps the heat and noise outside.



Ideal for Class 6, 7, and 8 Trucks

- **Preassembled and pre-plumbed for quick and easy installation**
- **Pneumatic, proportional plow and hoist controls keep hydraulics out of cab**
- **Simultaneous cylinder and spreader operation**
- **Touch screen control for spinner, auger/chain, and Pre Wet system**
- **Modular design to save frame rail space**
- **304 stainless steel construction for superior corrosion resistance**

The 30 Gallon Central Hydraulic System (CHS) is unmatched in functionality with a small footprint design.



15 GAL CENTRAL HYDRAULIC SYSTEM



Dump Hoist & Plow Controls

Directs plow and hoist functions

- 4 or 6-Function options
- Hoist safety interlock system
- Detented plow switch

4-Function Valve Option

- 3 Position, 4-way hoist, raise/lower, one lower port relief
- Integrated flow control
- 11 GPM max flow (non-proportional for spool valves)
- Main relief 1300-3000 PSI set at 2150 PSI
- Port relief hoist 400-1900 PSI set at 600 PSI
- All ports are #8 JIC

6-Function Valve Option

- 3 Position, 3-way plow raise/lower
- 3 Position, 4-way plow angle, two-port reliefs
- 3 Position, 4-way hoist, raise lower, one-port relief
- Integrated flow control
- 11 GPM max flow (non-proportional for spool valves)
- Main relief 1300-3000 PSI set at 2150 PSI
- Port relief angle 1300-3000 PSI set at 2150 PSI
- Port relief hoist 400-1900 PSI set at 600 PSI
- All ports are #8 JIC



Clutch Pump Kits (sold separately)

Circulates oil to respective parts

- Meets demanding hydraulic requirements
- Fits most 1-Ton & Super Duty trucks
- Works with or without air conditioning

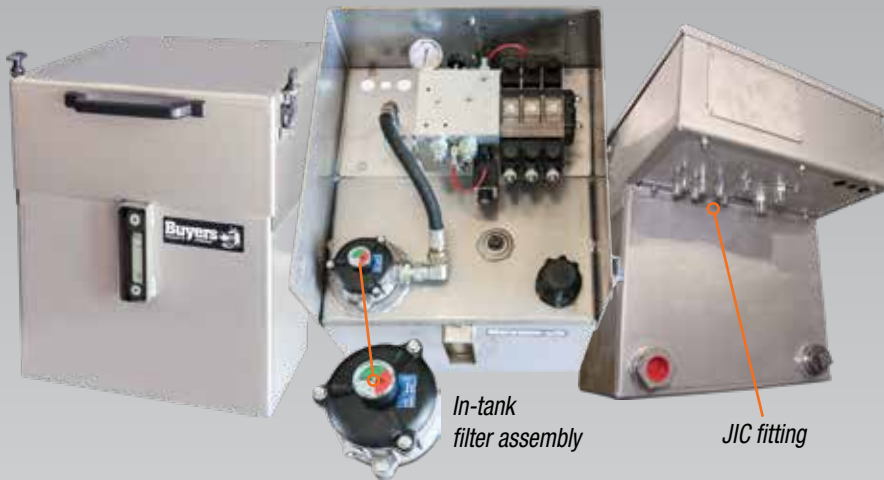


Spreader/Liquid Spray Controller

Directs spreader functions

- Controller unit for Auger/Conveyor, Spinner & Pre-wet
- Automatically switches between manual and auto modes for uninterrupted spreading
- Optional Garmin® GPS for proportional ground speed control





Central Hydraulic System

Center for directional oil flow and plow, spreader, and hoist control

- Save frame rail space
- In-tank return filter assembly for oil refinement
- Pre-plumbed for quick installation
- 304 Stainless steel construction
- 4 or 6-Function valve options

Pre-Wet Systems (optional)

Complete chemical dispersion systems

- Works with spreaders for more efficient material applications
- Systems include 30-200 gal. tanks, pre-plumbed pump enclosure, in-cab controller, all required hoses, fittings, valves, and clamps



30 GAL CENTRAL HYDRAULIC SYSTEM



Optional 8 button auxiliary control panel available

Pneumatic Hoist and Plow Control

Proportional controls of hoist and plow

- 6-Function options (additional available)
- Hoist safety interlock system
- Detented plow lever



Clutch Pump Kits (sold separately)

Circulates oil to respective parts

- Meets demanding hydraulic requirements
- Fits most class 6, 7, and 8 trucks
- Works with or without air conditioning

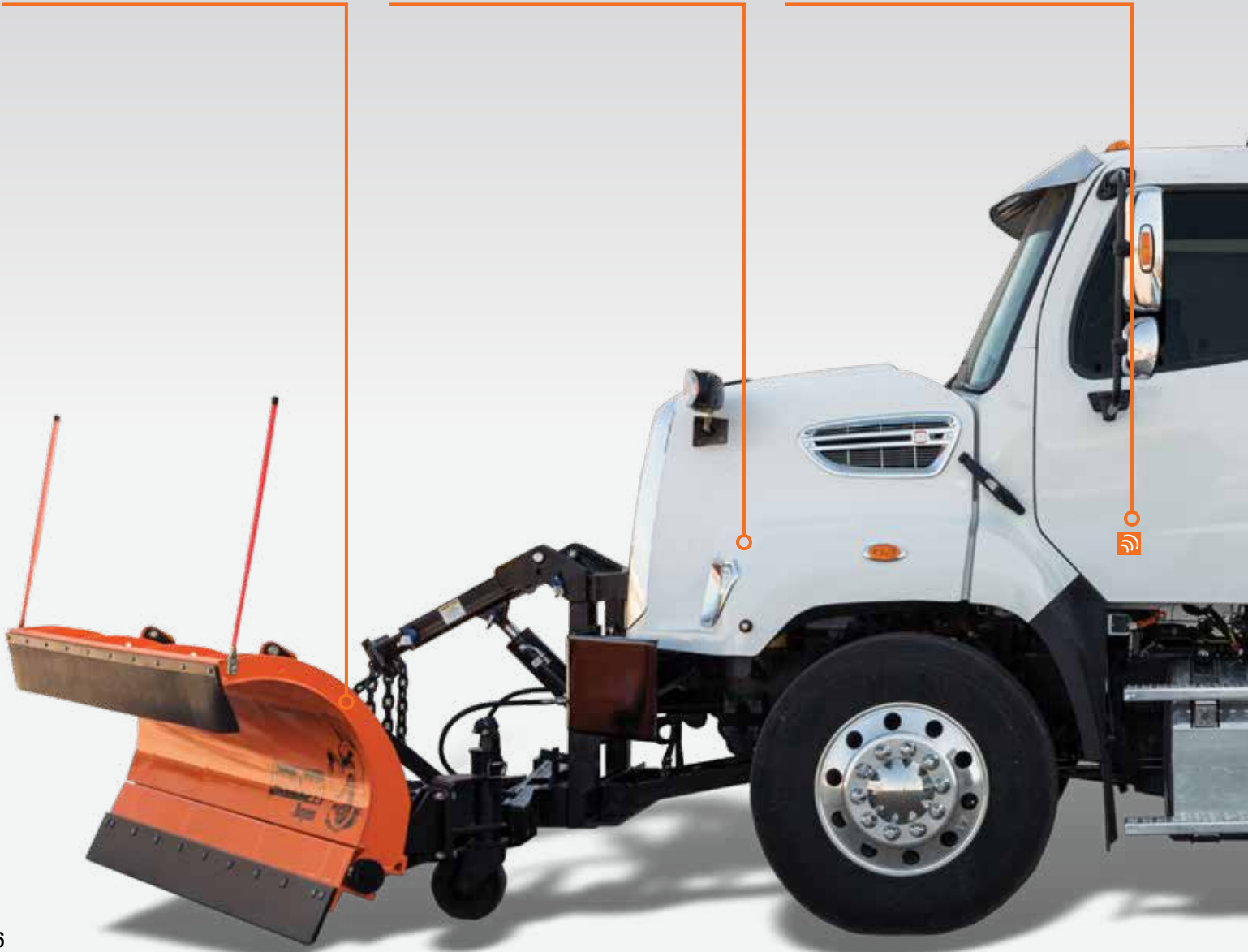


GARMIN.

Spreader Controller

Directs spreader functions

- Controller unit for Auger-Conveyor, Spinner & Pre-wet
- Automatically switches between manual and auto modes for uninterrupted spreading
- Includes Garmin® GPS for proportional ground speed control





Power Take Off *(sold separately)*

Powers pump

- Available in cable, air, and electric hot shift
- Common mounting style for easy installation of hydraulic pumps
- Central hydraulic system requires either PTO or clutch pump

Central Hydraulic System Tank

Provides directional oil flow for plow, spreader, and hoist control

- Cutting edge, space saving design
- In-tank return filter assembly for oil refinement
- 6-Function valve options (additional available)
- JIC Bottom ported manifold eliminates excessive hoses
- 30 gallon, 304 stainless steel tank



The Buyers family of manufacturing companies

Tracom

Boomerang
RUBBER, INC.

Romotech
Rotational Molding Technologies, Inc.

PROGRESSIVE
POWDER COATING, INC.

www.buyersproducts.com

